

## BEE CREATIVE WITH PAINT AND CLAY LESSON

10 minutes

10 minutes

10 minutes

10 minutes

10 minutes

### SUMMARY/BIG IDEA:

Students review the structure of a bee body and demonstrate the aesthetic of the honey bee through painting and sculpture.

Students review the stresses on honey bees and create something to demonstrate how we can help the bee population.

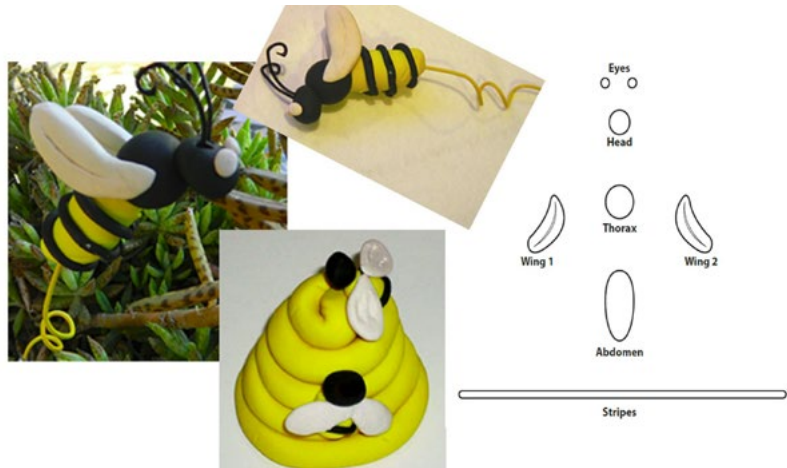
### MATERIALS & RESOURCES:

- Paint, brushes, paper
- Clay – your preference - modeling, polymer, air dry, kiln fire
- [34 best bee crafts for kids](#)
- [Example of how to turn labeling the bee into an art project](#)
- [Inside the Hive Live Bee Cam with Infrared Camera](#)

## STEPS:

### PART ONE:

1. Open the link called [Inside the Hive Bee Cam with Infrared Light](#). Have playing where students can see the bees moving in the hive for inspiration as they work.
2. Set up painting and clay materials.
3. Review the parts of a honey bee including the difference between the queen, worker, and drone.
4. Provide images of bees including photographs and artist's work.
5. Review the stresses on honey bees.
6. Discuss ways we can use paint or clay to teach others about the stresses on honey bees and how we can help.
7. Studio time for painting and sculpting.
8. For students who are interested in labeling their bee's body parts: label and tape small flag-like sheets of paper to toothpicks, place the toothpick into the clay while still soft, remove toothpicks before painting the bee, replace toothpicks with correct labels when the clay is dry.



## ASSESSMENT/REFLECTION:

Have students share what they created and identify what parts accurately represent a bee. Discuss how art can teach and engage people in conversations about the honey bee population.



**Bee Journal Entry** - What materials did you use today? Classify the materials as a solid, liquid, or gas. What do you feel is the biggest problem that honey bees face today? Why?

## **BEE CREATIVE WITH PAINT AND CLAY LESSON STANDARDS**

### **NEXT GENERATION SCIENCE**

5-PS1-3; 5-ESS3-1

### **ELA COMMON CORE**

W.3.1; W.3.8

W.4.1; W.4.8

W.5.1; W.5.8