

BECOME A BEE HIVE LESSON



SUMMARY/BIG IDEA:

Students will learn about the three types of bees in the hive and then act out various worker bee jobs.

MATERIALS & RESOURCES:

- Queen, worker, and drone bee images
- Bee Job Chart
- **The Magic School Bus: Inside a Beehive**, by Joanna Cole
- [Life Size Honey Bee \(optional\)](#)
- [The Magic School Bus: Inside a Bee Hive video](#)
- [Queen Bee getting Royal Jelly](#)
- [Visual for size comparison for 3 types of honey bees](#)
- [Bee Landing Pad, live cam](#)



STEPS:

PART ONE:

1. Read the book, **The Magic School Bus: Inside a Beehive** by Joanna Cole, to the class.
2. Show students a picture of a queen bee and tell them: only one queen per hive, fed royal jelly when she is a larvae to make her abdomen longer and to enable her to live 3-5 years, no barbs on stinger so she can sting repeatedly without dying, lays up to 2,000 eggs a day, only leaves the hive once for a mating flight.
3. Show students a picture of a drone bee and tell them: male bee, only job is to mate with a queen bee, dies after mating, no stinger, larger body and larger eyes.
4. Show students a picture of a worker bee and tell them: all female bees, work as a team, participate in each job during their short, 6 week lifespan.

PART TWO:

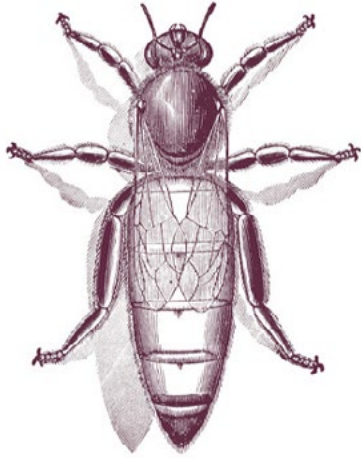
1. Show the bee job chart of worker bee jobs throughout their life.
2. Tell the students that you want to turn the classroom into a bee hive! Have students work in groups to suggest how they can act out each part of a working bee hive. Remind students that each hive has one queen, a few drones, and many workers. For example, a cleaner bee can use a broom to sweep the classroom floor “cells”, a nurse bee can use a water bottle to feed nectar and pollen to a baby bee, a forager bee can carry pieces of yellow paper and do a waggle dance to show other foragers where to find the pollen, and a guard bee can stand at the classroom door “hive entrance” to make sure only your class bees come in and out. Continue switching roles while the teacher brings three students at a time to the observation hive to complete the assessment.

ASSESSMENT/REFLECTION:

Bring three students at a time to the observation hive. Ask each student to point out the queen, a drone, and a worker bee. Ask the students to work as a team to find a worker bee doing each one of the jobs they learned about. No Live Bees Required: use [this link](#) to observed a live feed bee hive

Bee journal entry- Draw a picture of a worker bee performing each job. Then write a short story about the jobs from the bee’s perspective.

LESSONS ON THE HONEY BEE



Queen Bee

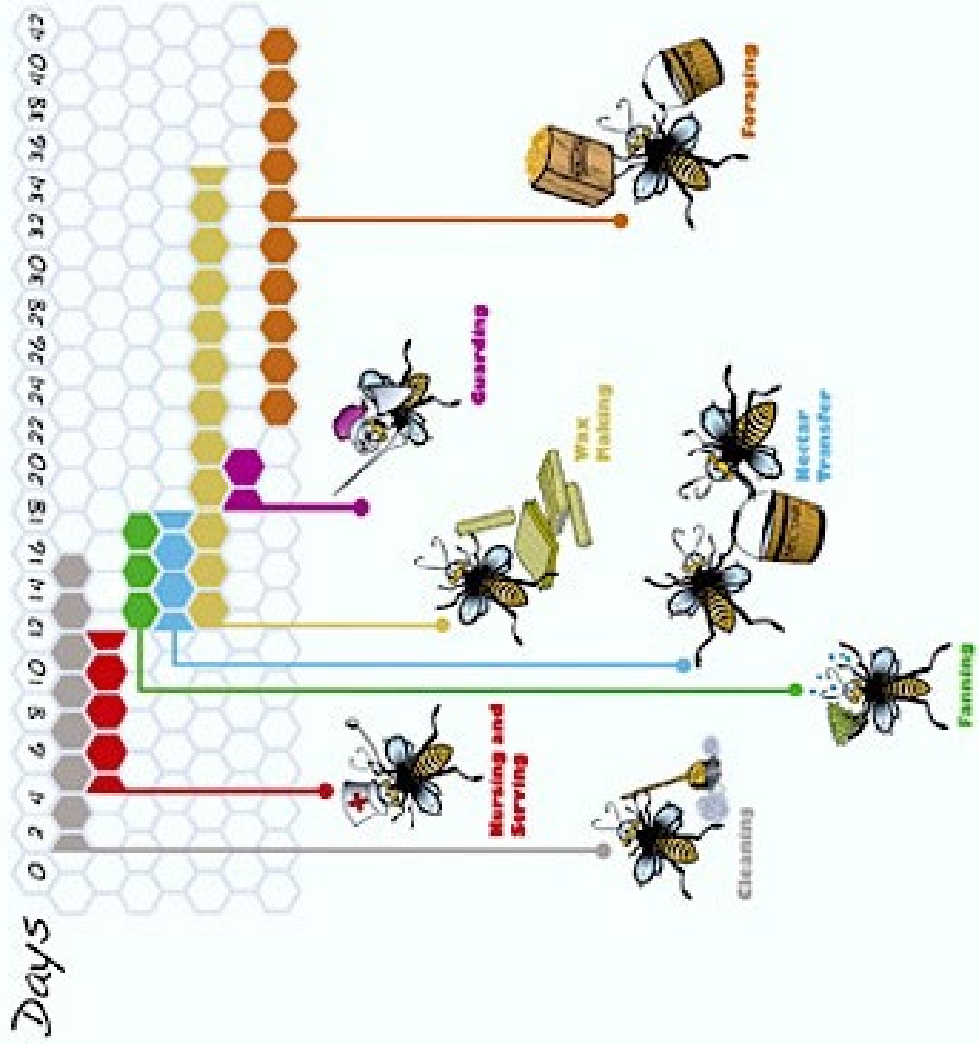


Worker Bee



Drone Bee

A Worker Bee's Life



BECOME A BEE HIVE LESSON STANDARDS

NEXT GENERATION SCIENCE

3-LS2-1; 3-LS4-2;

4-PS3-2; 4-PS4-3; 4-LS1-2

ELA COMMON CORE

RI.3.1; RI.3.2; RI.3.3; W.3.3

RI.4.1; RI.4.2; RI.4.3; W.4.3

RI.5.1; RI.5.2; RI.5.3; W.5.3